

Can you design a set of 4 stamps based on characters from your favourite fairy tale?



The Jolly Postman has to make sure he knows all the addresses of the houses he visits. Can you with an adult learn the address of where you live and have a try at writing your address



Read a fairy tale and then draw a picture of your favourite part or character and then have a go at labelling/writing a sentence to say why you liked it. Remember to have a go using your phonics!



The Jolly Postman travels everywhere on his bike. He would like a van-can you design and/or make him one? You can make it any way you like, for example, you could draw it, paint it or junk model it!

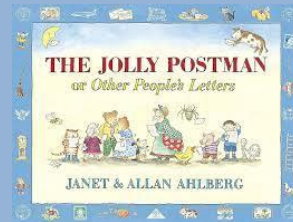


In this grid are your different topic home learning tasks for this term. Complete at least 5 over this term. Home learning to be handed in on a Thursday.

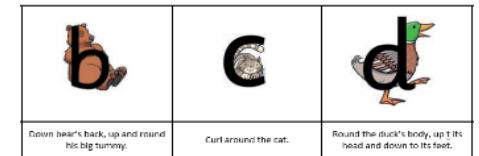
Remember to share both your reading scheme book and library book which need to be returned on a Monday. PE will be on Thursday morning and Forest School will be on a Thursday afternoon.

This term our topic will be **Fantastic Tales**. The texts we will be sharing are:

The Jolly Postman and The Jolly Christmas Postman



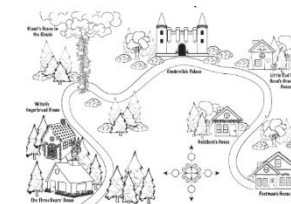
Remember to practice writing your numbers from 0-10 and your letters using your formation rhymes to help you.



The Jolly Postman delivers a letter to the 3 bears from Goldilocks to apologise for eating their porridge. Could you design and/or make the bears something yummy to eat instead? Don't forget to write down your recipe!



Could you be like the Jolly postman and go on a bike ride or for a walk? Can you take/draw a picture of 3 things you saw on your route?



The Jolly Postman follows his postman map to deliver his post. Can you make a map of your route to school?