

Can you design a set of 4 stamps based on characters from your favourite fairy tale?



The Jolly Postman has to make sure he knows all the addresses of the houses he visits. Can you with an adult learn the address of where you live and have a try at writing your address



Read a fairy tale and then draw a picture of your favourite part or character and then have a go at labelling/writing a sentence to say why you liked it. Remember to have a go using your phonics!



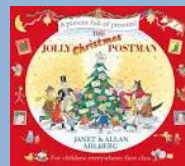
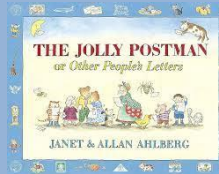
The Jolly Postman travels everywhere on his bike. He would like a van-can you design and/or make him one? You can make it any way you like, for example, you could draw it, paint it or junk model it!



In this grid are your different topic home learning tasks for this term. Complete at least 4 over this term. Home learning to be handed in on a Thursday. Remember to share both your reading scheme book and library book which need to be returned on a Monday. Forest School will be on a Wednesday and PE on a Friday.

This term our topic will be **Fantastic Tales**. The texts we will be sharing are:

**The Jolly Postman** and **The Jolly Christmas Postman**



**"POSTER COMPETITION - BE SAFE and BE KIND to SWANLEY**  
- too many dog owners let their dogs mess on streets, driveways and gardens and don't clear up the mess.

- too many dog owners leave poo bags on ground instead of using bins provided.

Design a poster to encourage/persuade dog owners to fix both of these problems.

Use big, bold writing.

Draw large, clear pictures.

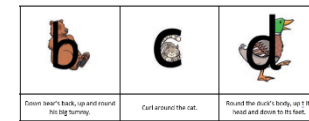
Winning entries will be displayed across Swanley to remind dog owners of the right thing to do."

Please make sure entries are labelled with name and class.

At the end of Term 2, please can you bring any completed entries to the school office.

Thank you very much,

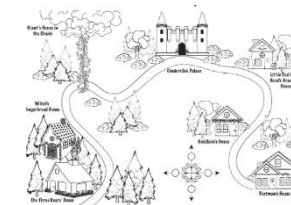
Remember to practice writing your numbers from 0-10 and your letters using your formation rhymes to help you.



The Jolly Postman delivers a letter to the 3 bears from Goldilocks to apologise for eating their porridge. Could you design and/or make the bears something yummy to eat instead? Don't forget to write down your recipe!



Could you be like the Jolly postman and go on a bike ride or for a walk? Can you take/draw a picture of 3 things you saw on your route?



The Jolly Postman follows his postman map to deliver his post. Can you make a map of your route to school?